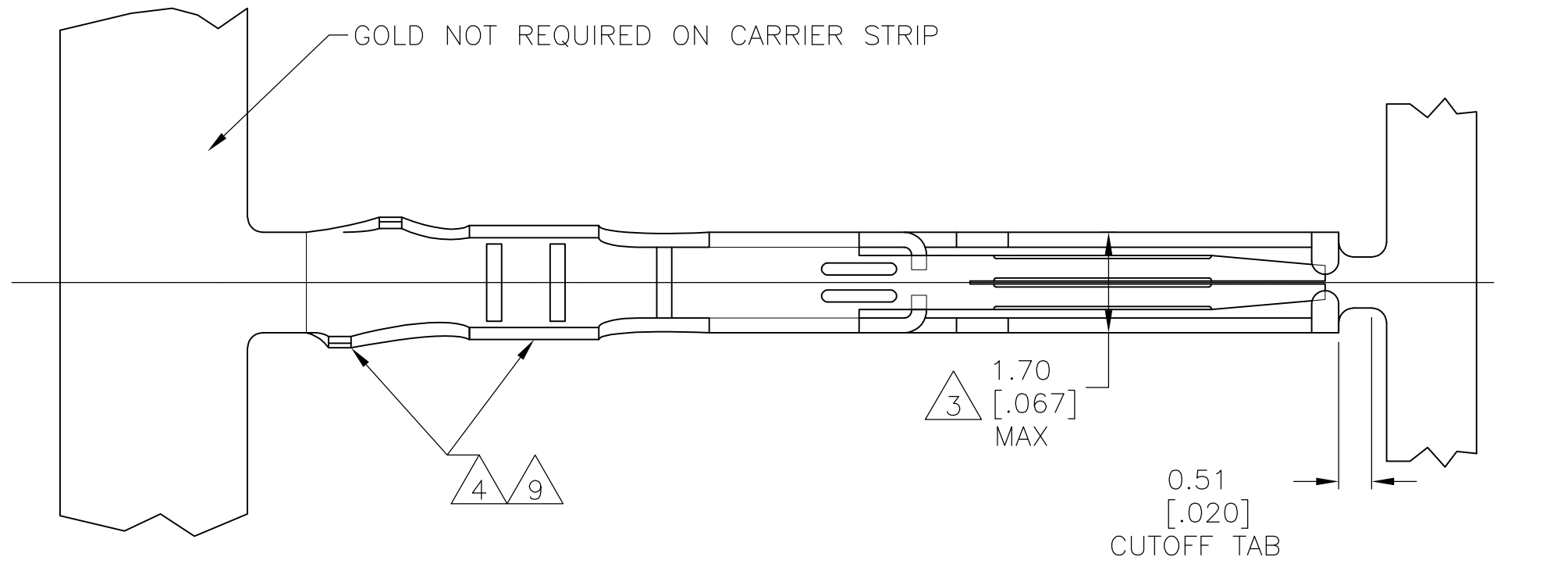
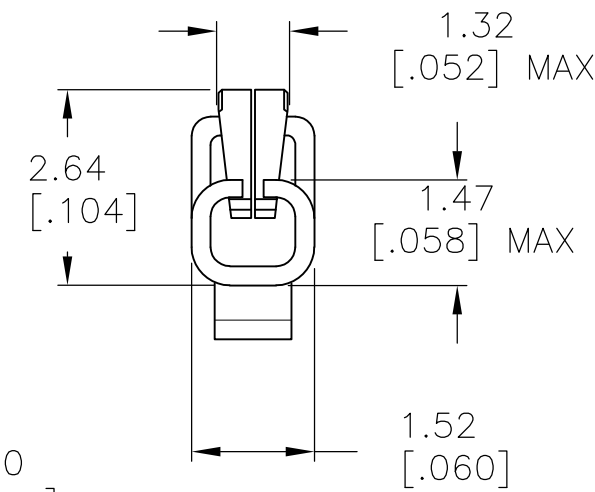
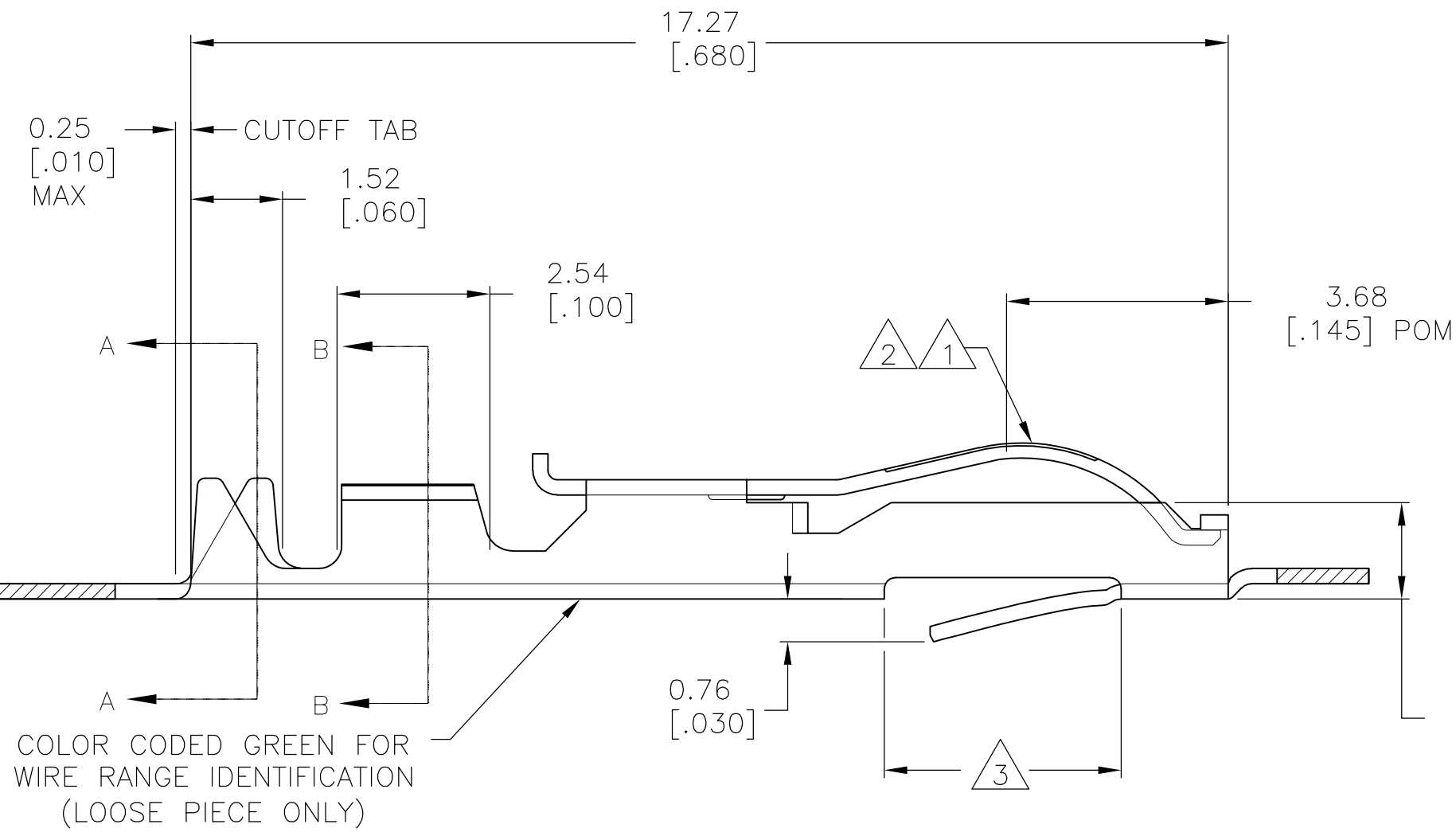


THIS DRAWING IS UNPUBLISHED. RELEASED FOR PUBLICATION
 © COPYRIGHT BY TYCO ELECTRONICS CORPORATION. ALL RIGHTS RESERVED.

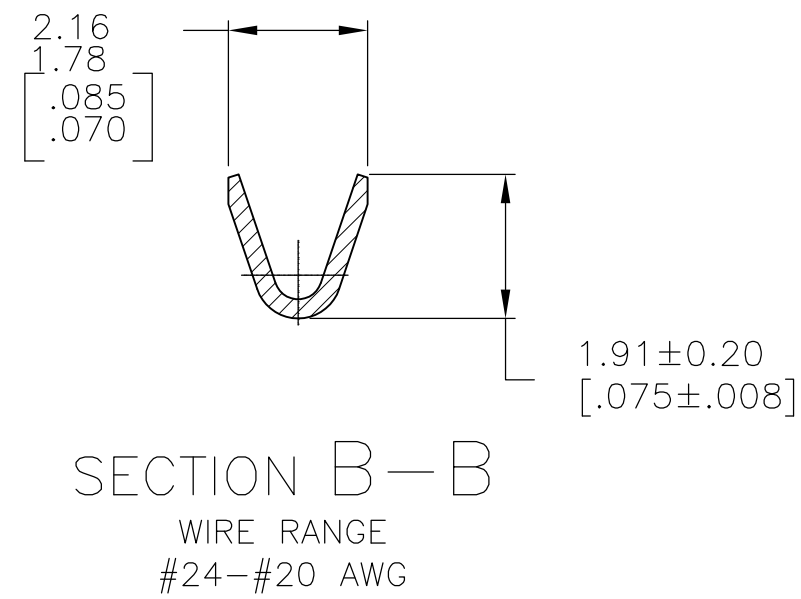
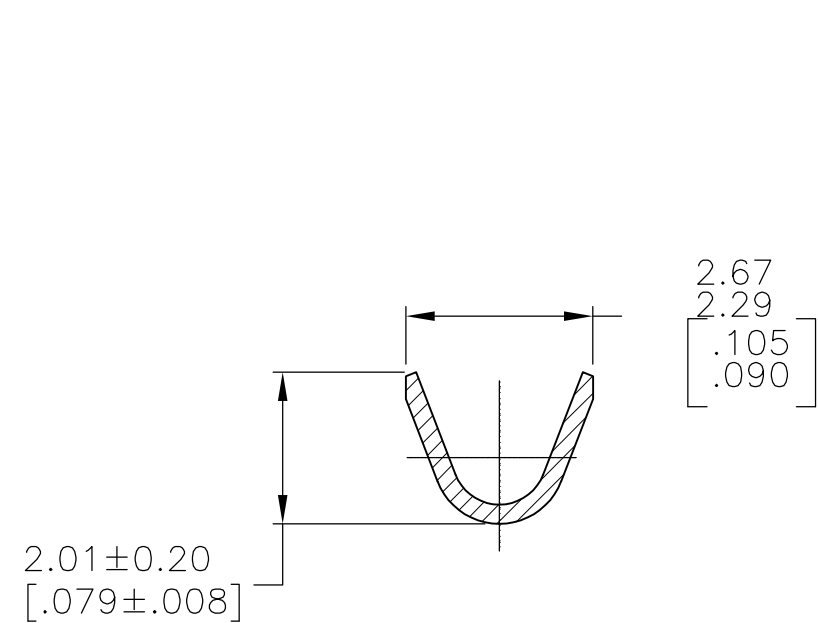
LOC	DIST	REVISIONS			
P	LTR	DESCRIPTION	DATE	DWN	APVD
AD	00	V1	REVISED PER ECO-08-003115	2/12/08	BSV MM



- 1 .000030 GOLD OVER .000030 NICKEL IN CONTACT AREA.
- 2 .000015 GOLD OVER .000030 NICKEL IN CONTACT AREA.
- 3 .067 MAX ALLOWED IN LOCKING LANCE AREA
- 4 TIN-LEAD IN CRIMP AREA.
- 5 OBSOLETE
- 6 .000050 GOLD OVER .000050 NICKEL IN CONTACT AREA. REMAINDER OF CONTACT GOLD FLASH OVER NICKEL.
- 7 .000015 GOLD OVER .000030 NICKEL IN CONTACT AREA. REMAINDER OF CONTACT GOLD FLASH OVER NICKEL.
- 8 UNPLATED PARTS IN STRIP FORM REELED ON CORRUGATED REEL FOR SALABLE PART.
- 9 TIN PLATE IN CRIMP AREA



COLOR CODED GREEN FOR WIRE RANGE IDENTIFICATION (LOOSE PIECE ONLY)



5-583853-3	-	1 9	5-583853-5
5-583853-2	5-583853-7	2 9	5-583853-4
1-583853-3	-	8	1-583853-1
OBSOLETE	1-583853-0	7	1-583853-1
583853-8	-	6	583853-9
OBSOLETE	583853-3	1 4	583853-5
583853-2	583853-7	2 4	583853-4
STRIP PART # STD REELING LEFT TO RIGHT	STRIP PART # REELING RIGHT TO LEFT	FINISH	LOOSE PIECE

THIS DRAWING IS A CONTROLLED DOCUMENT.

DWN	A. STAUB BG	02AUG93
CHK	H ROSE	18FEB94
APVD	H ROSE	18FEB94
PRODUCT SPEC	NAME	
APPLICATION SPEC	Tyco Electronics Corporation Harrisburg, PA 17105-3608	
MATERIAL	PHOS BRONZE	FINISH
SEE TABLE	WEIGHT	-
CUSTOMER DRAWING	SCALE	10:1
SIZE	A2	CAGE CODE
00779	DRAWING NO	C=583853
RESTRICTED TO	SHEET	1 OF 1
REV	V1	